

The IBA Newsletter

A resource for upcoming conference deadlines, social events, workshops, general information pertinent to your field, program reminders and other relevant activities

Hope you all had a great summer and are ready for a productive and successful school year!



Get Social.

Join Iowa Biosciences Academy on LinkedIn and Facebook.



IOWA
BIOSCIENCES
ACADEMY



Save the Date! IBA Fall 2015 Events:

Fall Kick-Off (mandatory for IBA undergrads)

Thursday, September 3rd from 6:00-7:30pm
IMU/Hubbard Park

Mid-term Study Break

Sunday, October 11th from 5:00-6:00pm
UCC 2780 (Old Capitol Mall)

(Early) Thanksgiving Celebration

Sunday, November 8th from 4:30-6:00pm
Venue TBD

IBA Junior/Senior Scholar Seminars

(mandatory for IBA undergrads)

Thursday, December 3rd (tentative)
6:30-9:00pm

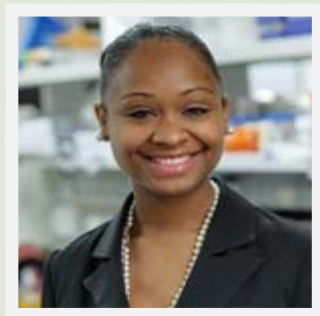
Congratulations and welcome to our
2015-16 IBA Graduate Student Fellows



Amanda Ward,
Clinical Psychology



Toby Avalos,
Anthropology



Brittany Williams,
Neuroscience

OPPORTUNITIES

NSF - GRADUATE RESEARCH FELLOWSHIP (GRFP) WORKSHOP

Thursday, September 3, 2015 - 11:00am to 1:00pm

University Capitol Centre UCC-2520-D

FOR MORE INFORMATION AND THE REGISTRATION LINK CLICK [HERE](#)

UNDERGRADUATE CERTIFICATE IN CLINICAL AND TRANSLATIONAL SCIENCE

Eligible students must have:

- 45 semester hours completed
- 3.0 GPA or higher
- Currently conducting lab research
- BIOL:1411 and MATH: 1460

FOR MORE INFORMATION VISIT:

<http://admissions.uiowa.edu/academics/clinical-and-translational-science>

CONSIDER JOINING THE ASSOCIATION OF MULTICULTURAL STUDENTS

FOR MORE INFORMATION VISIT:

<http://www.medicine.uiowa.edu/ams/>

TRAVEL



IBA Students* are encouraged to submit an abstract and present your work at the annual ABCRMS conference.

Deadline: September 11, 2015

For more info and to register visit

<http://www.abrcms.org/index.php/abstracts-posters/abstract-submission-selection>

IBA can cover the cost of registration, airfare, lodging and incidentals for approved conference travel.

Travel Funding Opportunity

The Dewey Stuit Fund for Undergraduate Research can fund

- undergraduate student travel to disciplinary conferences, workshops, archives, or other sites, either to present their work or to advance their research projects
- undergraduate research with a faculty mentor (e.g. software, equipment, participant fees, etc.)

For more info visit: <http://clas.uiowa.edu/students/scholarships/dewey-stuit-fund-undergraduate->



Study Tips - *Try this Out!*

Read the Syllabus: There is so much valuable information to be learned from the syllabus. If you read it carefully you can learn about time management, nature of assignments, and even about the instructor.

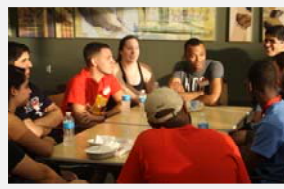
Congratulations to the IBA students who recently completed the Candidate to Scholar transition:

Maya Amjadi • John Baer • Michael Dominguez •

Niko McCarty • Gocale Nicoue • Maria Nunez Hernandez

Summer 2015 IBA Events

Summer Welcome Event

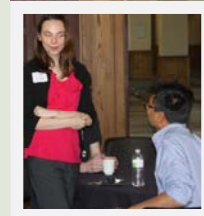
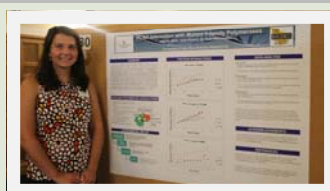
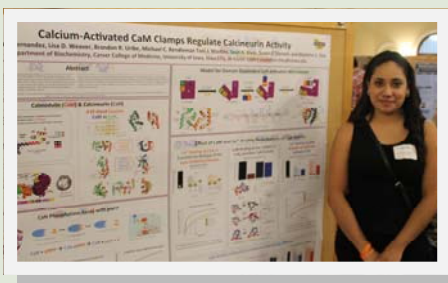
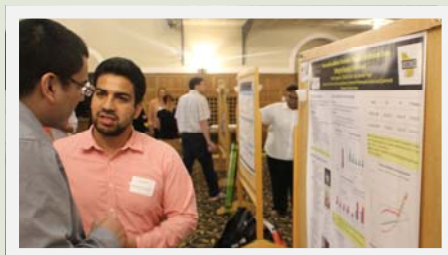
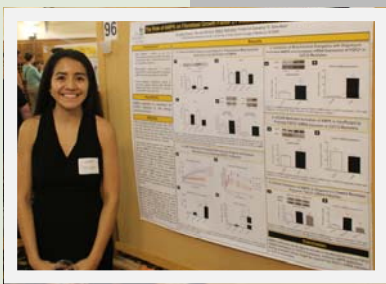


IBA Mentor Mixer



Summer 2015 IBA Events

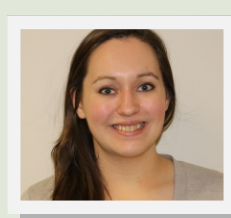
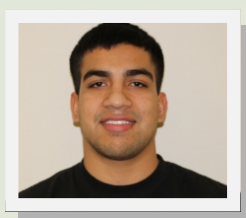
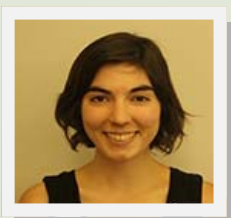
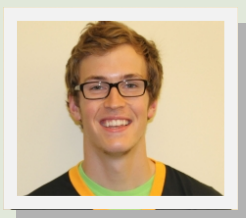
Summer Undergraduate Research Conference & Reception



2015 SURC Poster Award Winners:

IBA Candidate Poster Award Recipients

IBA Scholar Poster Award Recipients



1st place:
Niko McCarty

2nd place:
Maya Amjadi

1st place:
Edwin Sagastume

2nd place:
Sarah Bannon

VOLUNTEER and GET INVOLVED

Career Leadership Academy

The Career Leadership Academy is an exciting opportunity for YOU to develop your leadership and professional skills –those same skills that employers have told use they’re looking for in new employees.

The program is comprised of 4 academic credit-bearing courses called “phases” that focus on developing the leadership skills you already have and discovering the ones you’ll need to be successful after graduation. Each phase of the program is filled with seminars, activities, and events designed to give you an edge as a leader in whatever career field you choose.

For more information visit:

<http://careers.uiowa.edu/leadershipacademy>

Volunteer Match

Volunteer Match works to promote organizations both on and off campus that fill every niche, including health and human services, arts and humanities, human rights, environmental causes, agriculture, social justice, animal welfare, public policy, and more.

For more information, visit:

<http://www.volunteermatch.org>

Discover Iowa

Discover Iowa works to promote partnerships with a wide range of public and private constituencies in order to facilitate the mutual exchange of ideas, resources, and expertise. These collaborative efforts create more opportunities for community involvement; extend the reach of the university’s academic, cultural, and health care resources; and enhance economic development.

For more information, visit:

<http://www.discover.uiowa.edu/get-involved>

Seminars & Conferences

For seminars specific to your areas of interests, please see:

Biology:

<http://www.biology.uiowa.edu/seminars.php>

Physics:

<http://www.physics.uiowa.edu/resources/events/calendar>

Institute for Clinical and Translational Science:

<http://icts.uiowa.edu/calendar-month>

Psychology:

<http://www.psychology.uiowa.edu/resources/events>

Biochemistry:

<http://www.medicine.uiowa.edu/biochemistry/seminars/>

Biochemistry:

<http://www.medicine.uiowa.edu/biochemistry/seminars>

Microbiology:

<http://www.medicine.uiowa.edu/microbiology/events/>

Chemistry:

<http://www.chem.uiowa.edu/news/colloquium-seminar-schedule>